

WPT[®]
POWER TRANSMISSION
C O R P O R A T I O N

Steel Water Cooled

Brakes

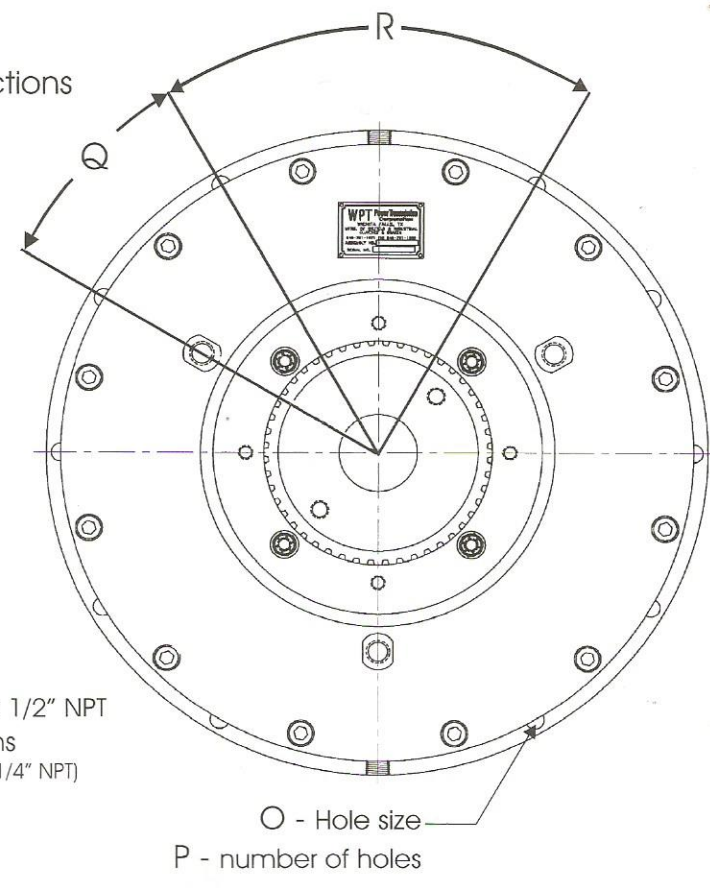
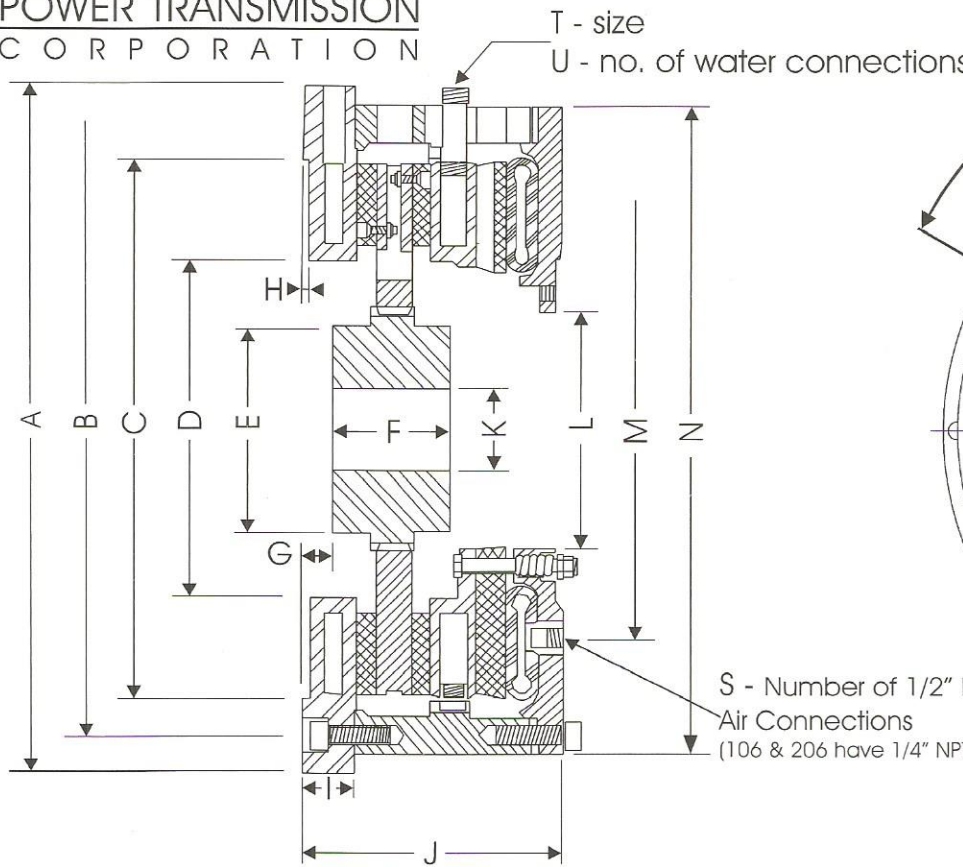


The **Brake for**
High Heat
Applications

WPT Power Transmission
Corporation

1600 Fisher Road
Wichita Falls, TX 76307

www.WPTpower.com



Dimensions

inches (millimeters)

Size	A	B	C ^(A)	D	E	F	G	H	I	J
106	8.753 (220)	8 (203)	7.378 (190)	3 1/8 (79)	2 11/16 (68)	2 (51)	3/4 (19)	1/8 (3)	1 1/4 (32)	5 1/8 (145)
206	8.753 (220)	8 (203)	7.378 (190)	3 1/8 (79)	2 11/16 (68)	4 3/8 (83)	3/4 (19)	1/8 (3)	1 1/4 (32)	7 21/32 (198)
108	12.125 (310)	11 1/8 (280)	8.378 (220)	4 5/8 (118)	3 1/2 (89)	2 (51)	1 1/8 (29)	1/4 (6)	1 1/2 (38)	6 11/16 (170)
208	12.125 (310)	11 1/8 (280)	8.378 (220)	4 5/8 (118)	3 1/2 (89)	4 (102)	1 1/8 (29)	1/4 (6)	1 1/2 (38)	8 7/8 (225)
111	16.000 (400)	14 3/4 (375)	11.378 (295)	6 1/4 (159)	4 (102)	2 3/4 (70)	3/4 (19)	1/4 (6)	1 1/2 (38)	7 7/8 (189)
211	16.000 (400)	14 3/4 (375)	11.378 (295)	6 1/4 (159)	4 (102)	4 13/16 (122)	3/4 (19)	1/4 (6)	1 1/2 (38)	9 1/2 (243)
114	18.750 (470)	17 1/2 (445)	14.378 (370)	8 7/16 (214)	5 1/2 (140)	3 3/4 (95)	1 1/16 (43)	1/4 (6)	1 3/4 (44)	8 1/2 (217)
214	18.750 (470)	17 1/2 (445)	14.378 (370)	8 7/16 (214)	5 1/2 (140)	5 5/8 (143)	1 1/16 (43)	1/4 (6)	1 3/4 (44)	10 15/32 (264)
116	21.275 (540)	20 (510)	16.378 (410)	9 17/32 (240)	6 (152)	4 (102)	2 9/32 (58)	1/4 (6)	1 3/4 (44)	8 5/8 (219)
216	21.275 (540)	20 (510)	16.378 (410)	9 17/32 (240)	7 (178)	5 5/8 (171)	2 9/32 (58)	1/4 (6)	1 3/4 (44)	12 3/4 (324)
118	23.250 (590)	22 (560)	18.253 (470)	11 1/16 (291)	7 (178)	4 (102)	1 1/16 (27)	1/4 (6)	1 3/4 (44)	9 (229)
218	23.250 (590)	22 (560)	18.253 (470)	11 7/16 (291)	-	6 1/2 (165)	1 5/8 (41)	1/4 (6)	1 3/4 (44)	11 3/4 (298)
121	27.000 (685)	25 1/2 (648)	21.378 (540)	13 1/2 (343)	9 (229)	4 (102)	1 1/4 (32)	1/4 (6)	1 3/4 (44)	9 1/2 (241)
221	27.000 (685)	25 1/2 (648)	21.378 (540)	13 1/2 (343)	-	6 1/2 (165)	1 1/4 (32)	1/4 (6)	1 3/4 (44)	11 7/8 (302)
124	30.000 (760)	28 3/4 (730)	24.378 (620)	13 1/2 (343)	9 (229)	4 (102)	1 3/8 (35)	1/4 (6)	1 3/4 (44)	10 (254)
224	30.000 (760)	28 3/4 (730)	24.378 (620)	13 1/2 (343)	8 (203)	8 (203)	1 3/8 (35)	1/4 (6)	1 3/4 (44)	10 5/8 (314)
124H	30.000 (760)	28 3/4 (730)	24.378 (620)	13 1/2 (343)	9 (229)	4 (102)	1 3/8 (35)	1/4 (6)	1 3/4 (44)	10 (254)
224H	30.000 (760)	28 3/4 (730)	24.378 (620)	13 1/2 (343)	8 (203)	8 (203)	1 3/8 (35)	1/4 (6)	1 3/4 (44)	12 3/8 (314)
130	37.000 (940)	35 1/2 (900)	30.378 (775)	18 1/4 (464)	10 (254)	5 (127)	1 3/8 (35)	1/4 (6)	2 (51)	11 1/16 (283)
230	37.000 (940)	35 1/2 (900)	30.378 (775)	18 1/4 (464)	10 (254)	9 (203)	1 3/8 (35)	1/4 (6)	2 (51)	16 3/4 (421)
130H	37.000 (940)	35 1/2 (900)	30.378 (775)	18 1/4 (464)	10 (254)	5 (127)	1 3/8 (35)	1/4 (6)	2 (51)	11 1/16 (283)
230H	37.000 (940)	35 1/2 (900)	30.378 (775)	18 1/4 (464)	10 (254)	9 1/4 (203)	1 3/8 (35)	1/4 (6)	2 (51)	16 5/8 (421)
136	43.500 (1105)	42 (1067)	36.378 (924)	22 1/2 (572)	12 (305)	5 5/8 (143)	1 3/8 (29)	1/4 (6)	2 1/4 (51)	11 3/4 (302)
236	43.500 (1105)	42 (1067)	36.378 (924)	22 1/2 (572)	12 (305)	11 (279)	1 3/8 (29)	1/4 (6)	2 1/4 (51)	18 1/4 (462)

(A) +.000/-0.003 (+.000/.076)

Specifications

WPT® Steel Water Cooled Brakes

Size	Dynamic Slip Torque ⁽¹⁾		Heat Dissipation Capacity		Water Flow ⁽²⁾		Max RPM ⁽³⁾	Total Weight		Hub & Drive Plate WR ²	
	lb. In @ 100 psi	NM @ 7 bar	hp	kw	gal/min	litre/min		lbs	kg	lb.ft. ²	kgm ²
106	3700	425	6	4.5	0.9	3.5	3500	50	23	0.5	0.0211
206	7400	850	12	8.9	1.8	7	3500	75	34	0.6	0.0253
108	5450	625	9	6.7	1.4	5.5	2850	90	41	0.7	0.0295
208	10900	1250	18	13.4	2.8	11	2850	135	61	1.2	0.0506
111	12350	1420	19	14.2	2.9	11	2075	175	79	3	0.1264
211	24700	2840	38	28.3	5.8	22	2075	230	104	2.5	0.1054
114	21500	2470	28	20.9	4.2	16	1625	275	125	11	0.4635
214	43000	4940	56	41.8	8.4	32	1625	325	147	1.8	0.0759
116	29550	3390	38	28.3	5.8	22	1425	370	168	11.7	0.4930
216	59100	6780	76	56.7	11.6	44	1425	550	249	17.1	0.7206
118	49400	5670	44	32.8	6.6	25	1250	435	197	29	1.2221
218	98800	11340	88	65.6	13.2	50	1250	570	259	17	0.7164
121	71000	8150	60	44.7	9	34	1075	620	281	38	1.6013
221	142000	16300	120	89.5	18	68	1075	740	336	49	2.0649
124	97000	11135	96	71.6	14.4	54	950	925	420	86	3.6240
224	194000	22270	192	143.2	28.8	108	950	1115	506	80	3.3712
124H	119500	13720	96	71.6	14.4	54	950	930	422	86	3.6240
224H	239000	27440	192	143.2	28.8	108	950	1120	508	80	3.3712
130	202500	23250	137	102.2	20.6	78	750	1250	567	200	8.4280
230	405000	46500	274	204.3	41.2	156	750	1900	862	395	16.6453
130H	260900	29950	137	102.2	20.6	78	750	1270	576	200	8.4280
230H	521800	59900	274	204.3	41.2	156	750	1920	871	395	16.6453
136	397200	45600	192	143.2	28.8	109	625	1550	703	392	16.5189
236	794400	91200	384	286.3	57.6	218	625	2700	1225	825	34.7655

(1) Torque Ratings: Service factors vary for each application. As a general guide, limit maximum air pressure to 65 PSI. Torque is directly proportional to the air pressure applied. Low coefficient friction material can be supplied on request, reduce above torque ratings by 30%. Smaller actuators are available to further reduce the torque rating if required. Consult factory for details. **(2) Water Flow:** Ratings shown are for maximum continuous heat dissipation. For other applications, water flow requirement may be reduced. Use 1 gallon of water per minute for each 6.7 horsepower or 1 litre of water per minute for each 1.3 kw to be dissipated. Outlet water temperature should not exceed 170 F/77 C. **(3) Slip Speed:** Should be limited to 60% of maximum RPM to maximize life.

K ^(B)	L	M	N	O	P	Q	R	S	T ^(C)	U	Size
1 7/8 (22)	2 (51)	4 3/4 (121)	8 13/16 (224)	11 1/32 (9)	4	-	90	2	1/4	4	106
1 7/8 (22)	2 (51)	4 3/4 (121)	8 13/16 (224)	11 1/32 (9)	4	-	90	2	1/4	6	206
2 1/2 (24)	2 1/4 (57)	6 5/8 (168)	11 1/8 (283)	17 1/32 (14)	4	60	120	2	3/8	4	108
2 1/2 (29)	2 1/4 (57)	6 5/8 (168)	11 1/8 (283)	17 1/32 (14)	4	60	120	2	3/8	6	208
2 13/16 (32)	3 1/4 (83)	8 1/2 (216)	14 3/4 (375)	21 1/32 (18)	4	60	120	2	1/2	4	111
2 13/16 (32)	3 1/4 (83)	8 1/2 (216)	14 3/4 (375)	21 1/32 (18)	4	60	120	2	1/2	6	211
3 7/8 (48)	5 (129)	10 3/4 (273)	17 1/2 (445)	21 1/32 (18)	6	45	90	2	1/2	4	114
3 7/8 (32)	5 (129)	10 3/4 (273)	17 1/2 (445)	21 1/32 (18)	6	45	90	2	1/2	6	214
4 1/4 (54)	8 3/8 (156)	12 1/2 (318)	20 (508)	21 1/32 (18)	10	30	60	2	1/2	4	116
4 7/8 (54)	8 3/8 (156)	12 1/2 (318)	20 (508)	21 1/32 (18)	10	30	60	2	1/2	6	216
4 1/8 (70)	8 (203)	14 3/16 (360)	22 (559)	21 1/32 (18)	10	30	60	3	1/2	4	118
4 1/8 (54)	8 (203)	14 3/16 (360)	22 (559)	21 1/32 (18)	10	30	60	3	1/2	6	218
6 5/16 (70)	9 1/4 (235)	16 (406)	24 7/8 (632)	21 1/32 (18)	10	30	60	3	1/2	4	121
4 7/8 (70)	9 1/4 (235)	16 (406)	24 7/8 (632)	21 1/32 (18)	10	30	60	3	1/2	6	221
6 5/16 (147)	13 1/4 (260)	19 (533)	28 (737)	21 1/32 (18)	10	30	60	3	1/2	4	124
4 7/8 (145)	13 1/4 (260)	19 (533)	28 (737)	21 1/32 (18)	10	30	60	3	1/2	6	224
6 3/16 (147)	13 1/4 (260)	19 (533)	29 (737)	21 1/32 (18)	10	30	60	3	1/2	4	124H
4 7/8 (145)	13 1/4 (260)	19 (533)	29 (737)	21 1/32 (18)	10	30	60	3	1/2	6	224H
7 (89)	17 3/8 (441)	24 3/4 (629)	34 3/4 (883)	25 1/32 (22)	16	20	40	4	3/4	4	130
7 (89)	17 3/8 (441)	24 3/4 (629)	34 3/4 (883)	25 1/32 (22)	16	20	40	4	3/4	6	230
7 (89)	17 3/8 (441)	24 3/4 (629)	34 3/4 (883)	25 1/32 (22)	16	20	40	4	3/4	4	130H
7 (89)	17 3/8 (441)	24 3/4 (629)	34 3/4 (883)	25 1/32 (22)	16	20	40	4	3/4	6	230H
8 3/8 (152)	18 3/4 (476)	30 1/2 (775)	41 (1041)	25 1/32 (22)	16	20	40	4	3/4	4	136
8 3/8 (152)	18 3/4 (476)	30 1/2 (775)	41 (1041)	25 1/32 (22)	16	20	40	4	3/4	6	236

(B) Maximum Bore. Larger bore sizes may be available on certain units. Please call factory for further details. **(C)** U.S. (Imperial) version NPT. Metric version BSPT. Water inlets must be at bottom of brake and outlets at top of brake.

Worldwide
Distribution

Consult our website for
a distributor in your
geographic region.

www.WPTpower.com

Other Quality Products from **WPT**[®]

LOW INERTIA

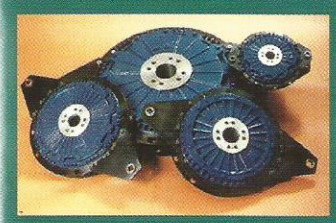


Low Inertia/Very Low Inertia Clutches & Brakes
High Torque Clutches
Spring Set - Air Release Brakes

Torque Range: 2,000 - 10,000,000 lb.in.

CLUTCHES & BRAKES

COMBINATION



Dry and Wet Units

Torque Range: 9,000 - 345,000 lb. in.

CLUTCH/BRAKES

POWER GRIP



Power Grip and PO Power Grip Clutches

Torque Range: 6,000 - 8,000,000 lb. in.

CLUTCHES

Call or write for additional information

WPT[®] 
POWER TRANSMISSION
C O R P O R A T I O N

Distributed by:

P.O. Box 8148 • Wichita Falls, Texas 76307
Ph: (940) 761-1971 • Fax: (940) 761-1989
www.WPTpower.com
email: info@WPTpower.com

